

# BLUES 4

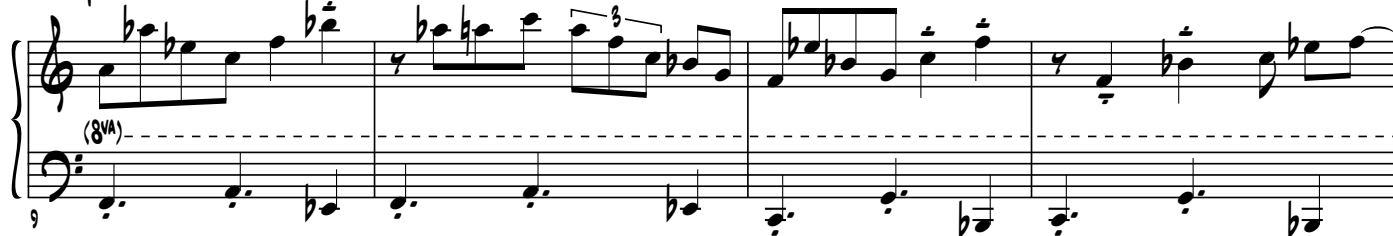
♩ = 190

GABRIELE ZANCHINI

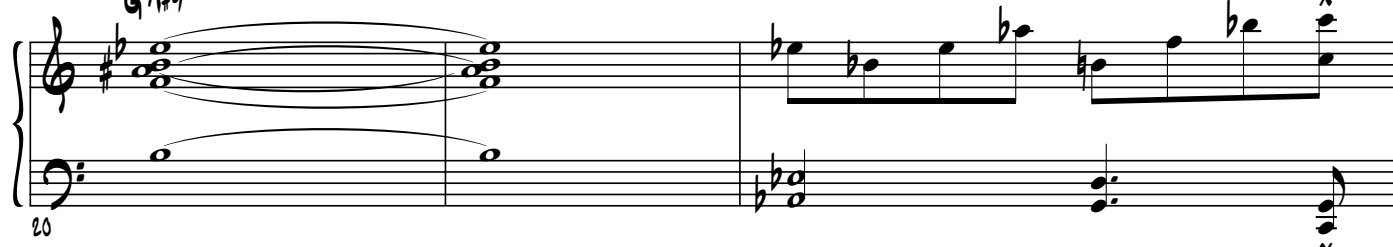
PIANO



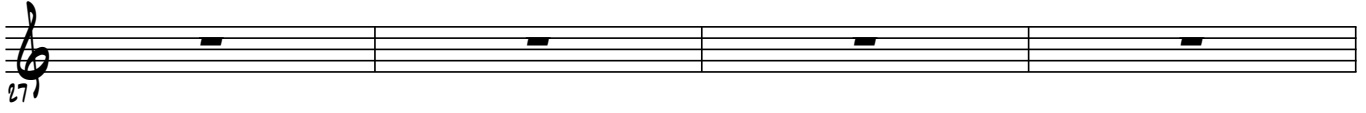
TEMA C<sup>MIN</sup>



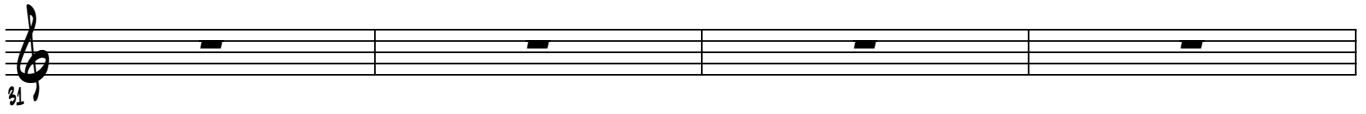
CODA



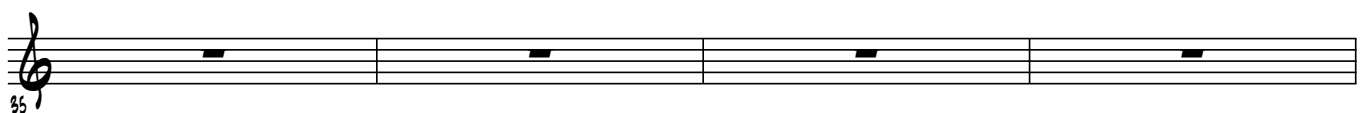
(SOLO) C<sup>min</sup>



F7

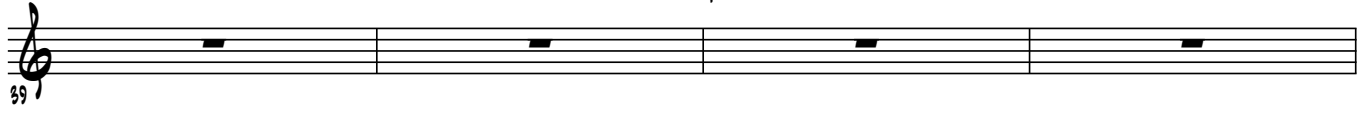


C<sup>min</sup>



A<sup>b</sup>M<sup>A</sup>9

G7(#5)



D<sup>b</sup>M<sup>A</sup>9(#11)

G7(#9)



# BLUES 4

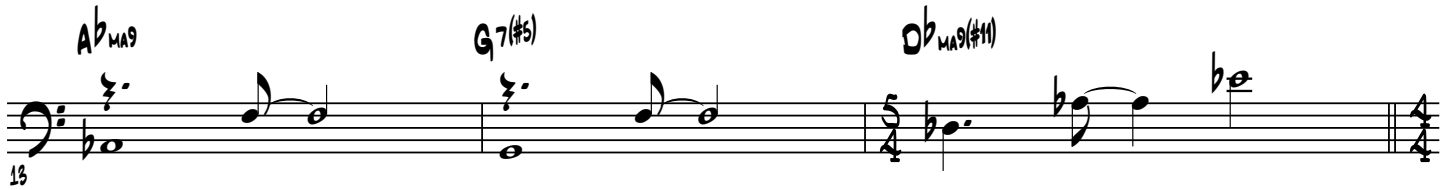
GABRIELE ZANCHINI

♩ = 190

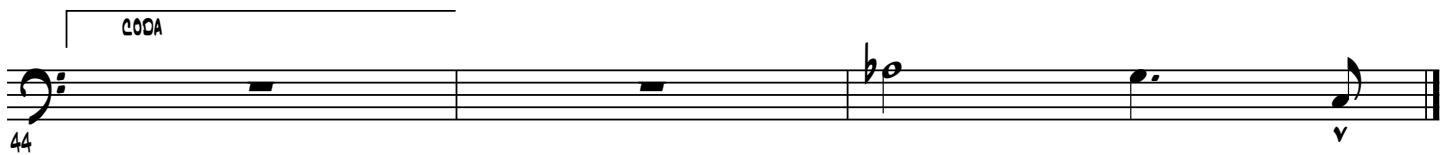
(INTRO) C<sup>MIN</sup>



(TEMA) C<sup>MIN</sup>



(SOLO) C<sup>MIN</sup>



# BLUES 4

GABRIELE ZANCHINI

♩ = 190

## (INTRO)

Musical notation for the Intro section, measures 1-4. It features a 4/4 time signature and a series of eighth notes marked with 'x' on a single staff.

## (TEMA)

Musical notation for the Tema section, measures 5-8. It shows a double bar line with repeat dots, followed by two measures with a '2' and a double bar line with repeat dots.

Musical notation for the Tema section, measures 9-12. It shows two measures with a '2' and a double bar line with repeat dots.

Musical notation for the Tema section, measures 13-15. It features eighth notes with accents and slurs, and a 5/4 time signature change.

Musical notation for the Tema section, measures 16-19. It shows two first endings (1. and 2.) and a double bar line with repeat dots.

## (SOLI)

Musical notation for the Soli section, measures 20-23. It features a double bar line with repeat dots, a '24' marking, and a double bar line with repeat dots.

Musical notation for the Soli section, measures 44-47. It features a 'CODA' marking and a double bar line with repeat dots.

# BLUES 4

SAX TENORE

GABRIELE ZANCHINI

♩ = 190

(INTRO)

Musical notation for the Intro section, featuring a treble clef, key signature of two sharps (F# and C#), and a 4/4 time signature. A single quarter note chord is marked with a '4' above it.

(TEMA DMIN)

Musical notation for the first line of the main theme, starting at measure 5. It features a treble clef, key signature of two sharps, and a 4/4 time signature. The melody consists of eighth and quarter notes with slurs.

Musical notation for the second line of the main theme, starting at measure 9. It features a treble clef, key signature of two sharps, and a 4/4 time signature. Chords G7 and Dmin are indicated above the staff.

Musical notation for the third line of the main theme, starting at measure 13. It features a treble clef, key signature of two sharps, and a 4/4 time signature. Chords Bbmaj9 and A7(#5) are indicated above the staff.

Musical notation for the fourth line of the main theme, starting at measure 16. It features a treble clef, key signature of two sharps, and a 4/4 time signature. Two first and second endings are shown with chords A7(#9) and A7(#5) marked above.

2

BLUES

(SOLI) DMIN

G7

DMIN

Bb MA9

A7(#5)

Eb MA9(#11)

A7(#9)(#5)

COCA

A7(#9)(#5)